



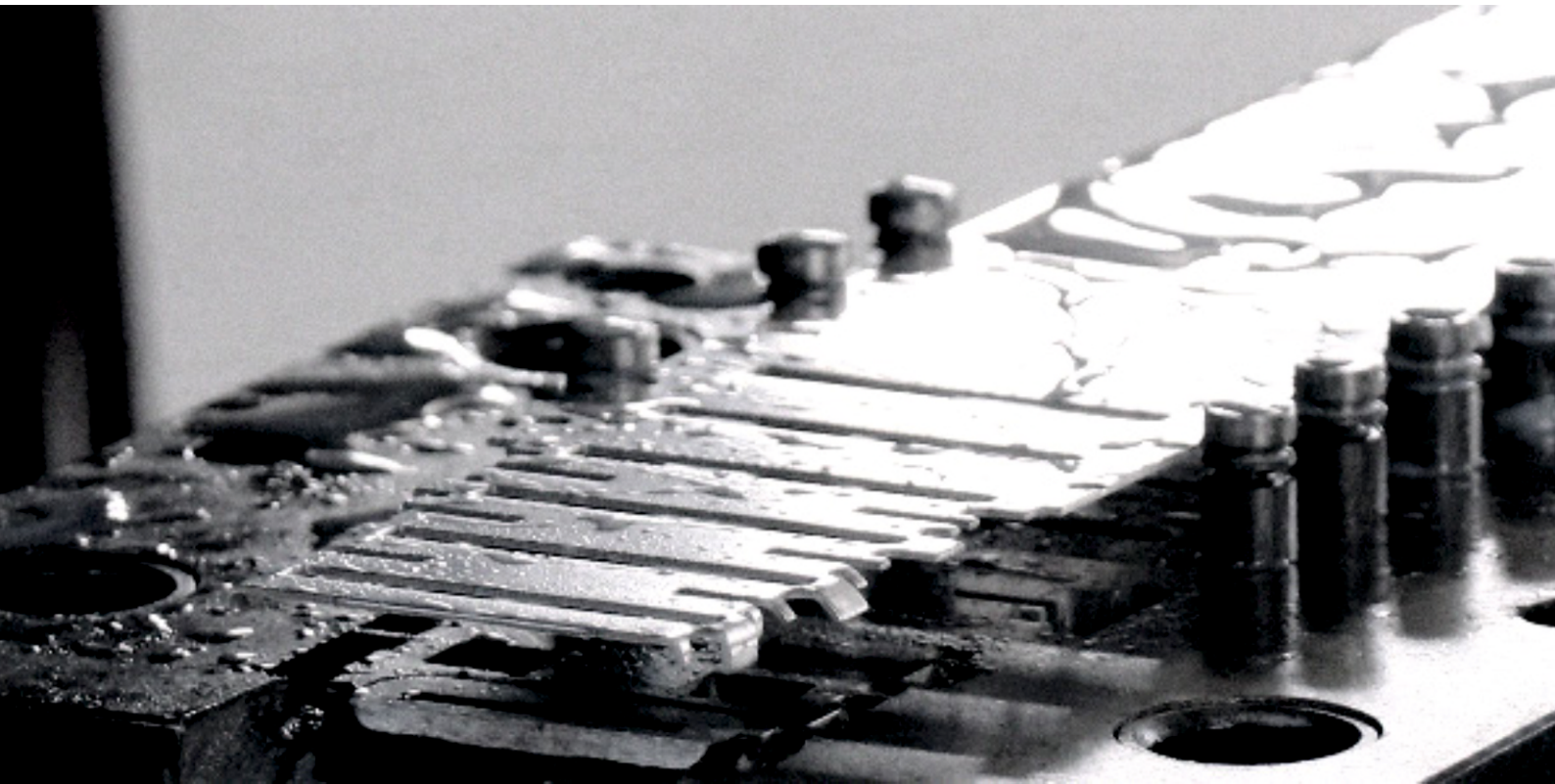
**DHANUKA**  
FITTINGS

ALUMINIUM WINDOW AND DOOR  
**ACCESSORIES**

Product Catalogue







**30+**

Years of  
Manufacturing  
Expertise

**800+**

Window  
Products

**30000+**

Sq. Ft.  
Manufacturing  
Facility

## About Company

Founded in 1994, Dhanuka Fittings has grown into one of India's **leading manufacturers of aluminum door and window hardware**. From a modest beginning in trading, we have evolved into a powerhouse of in-house manufacturing, research, and innovation.

Operating from a 30,000 sq. ft. state-of-the-art manufacturing facility with a team of 75+ specialists, we design, engineer, and manufacture over 90% of our product range under one roof. From raw material processing to anodizing and powder coating, every stage is controlled with precision to ensure uncompromised quality.

Our portfolio covers the **complete hardware ecosystem for aluminum windows and doors**—Hinges, Rollers, Locks, Handles, Louvers, Cleats, Friction Hinges, Plastic Hardware, EPDM, Woolpile, and more. With continuous investment in research and development, we not only refine existing products but also design and introduce new components that set benchmarks in performance and reliability.

Every product undergoes **rigorous testing** and every product is backed by our **10-year guarantee**, reinforcing our commitment to durability and trust. By combining advanced manufacturing with global sourcing, we deliver a one-stop solution where customers find everything they need from a single, dependable partner.

At Dhanuka Fittings, we don't just supply hardware—we build confidence, innovation, and long-lasting partnerships.

**Partner with us, and let's build safer, stronger, and better façades together.**



**10 Years**  
**Guarantee**  
**On all products**



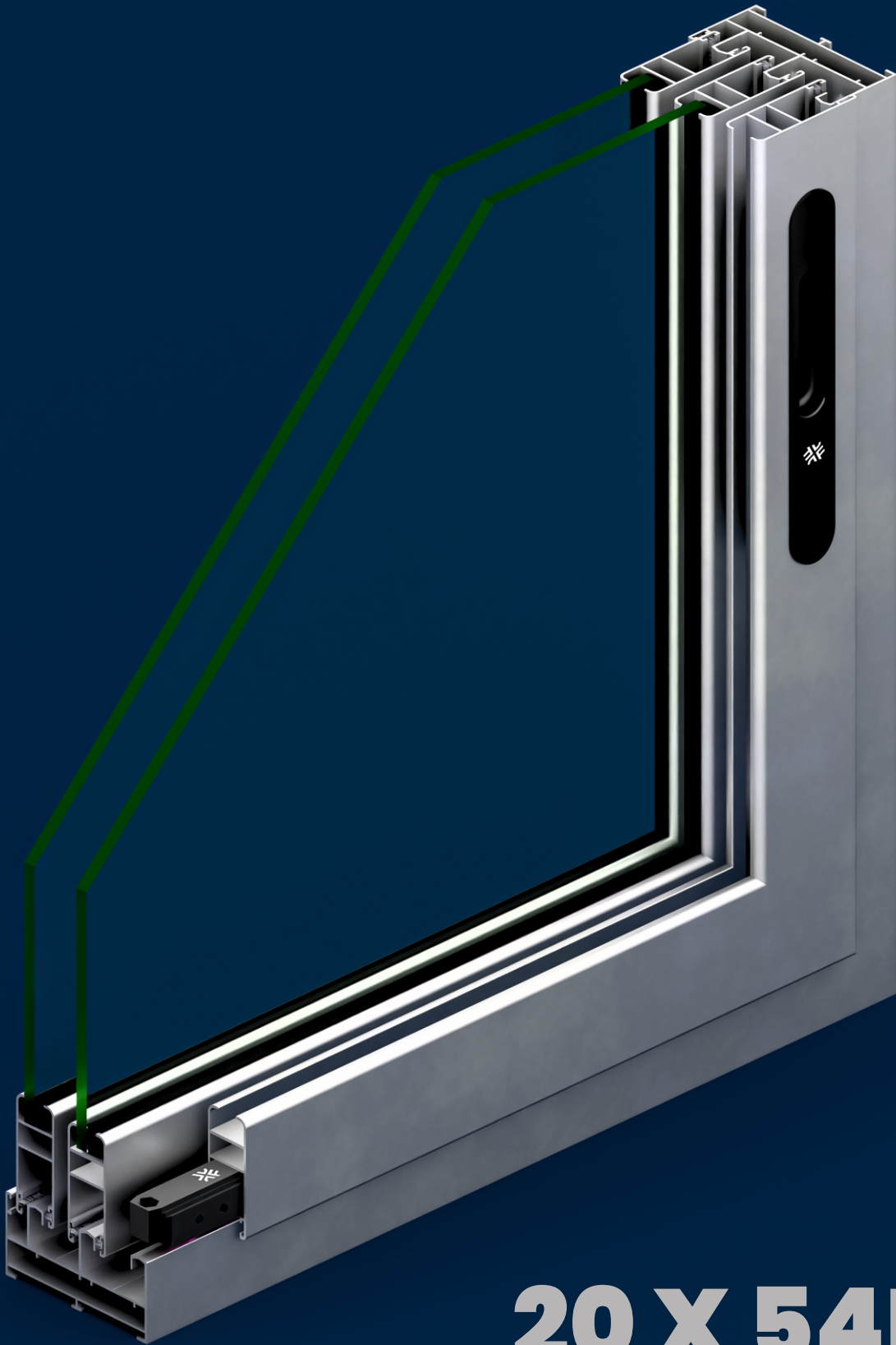
Your window  
deserves the best  
Choose **DHANUKA**  
Choose **QUALITY**



# INDEX

20 X 54MM SLIDING SERIES .....	1
25 X 54MM SLIDING SERIES .....	3
27 X 65MM SLIDING SERIES .....	5
29X65MM SLIDING SERIES.....	9
35X75MM SLIDING SERIES .....	12
MISCELLANEOUS SLIDING ACCESSORIES .....	16
18 X 50 MM SLIDING SERIES.....	17
25 X 50 MM SLIDING SERIES .....	18
EURO GROOVE ROLLER SS RAIL   HOLE CAP .....	19
WOOLPILE .....	20
40MM CASEMENT SERIES .....	21
50MM CASEMENT SERIES .....	23
45MM   52MM CASEMENT SERIES .....	25
Z CASEMENT SERIES.....	27
CONCEALED LOCKS AND ACCESSORIES.....	29
MULTIPOINT HANDLES (ROD) .....	31
MULTIPOINT (ROD) LOCKING ACCESSORIES .....	33
MULTIPOINT HANDLES (FORK) .....	34
MULTIPOINT LOCKING ACCESSORIES .....	36
CASEMENT LOCKING HARDWARE .....	39
GEORGIAN BAR AND ACCESSORIES .....	40
MORTISE LOCK AND ACCESSORIES .....	41
FRICTION HINGES .....	43
GLASS PACKING .....	48
WINDOW LOUVERS .....	49
PLEATED MESH .....	51
16X45 PROFILE.....	53
SLIDING FOLDING SYSTEM .....	57





**20 X 54MM  
SLIDING SERIES**



**R2001**  
1x1 - 40kg/pair | ₹40/- pc



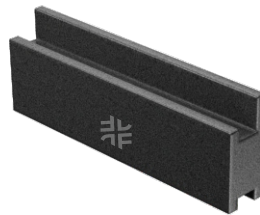
**R2002**  
2x2 - 60kg/pair | ₹60/- pc



**CC016 w/wo**  
w - With Nut | ₹36/- pc  
wo - W/O nut | ₹32/- pc



**CCS2001**  
SGU | ₹50/- pc



**PHUG01**  
Shutter Guide | ₹4/- pc



**PHLG01**  
Lock Guide | ₹8/- pc



**PHIC01**  
Interlock Cap | ₹8/- pc



**SSL Corner**  
₹2/- pc



**PHAH01**  
Antilift Handle | ₹8/- pc



**PHSC**  
8mm | ₹1/- pc  
10mm | ₹1.2/- pc  
12mm | ₹1.5/- pc



**EPDM**  
U EPDM | ₹320/- kg



**Woolpile**  
6.8x5mm Non Silicon | ₹2.5/- mtr  
6.8x5mm Silicon | ₹8.0/- mtr  
6.8x5mm Silicon+Fin | ₹10.5/- mtr



**25 X 54MM  
SLIDING SERIES**



**R2501**  
2x2 - 60kg/pair | ₹64/- pc



**R2502**  
2x4 - 80kg/pair | ₹80/- pc



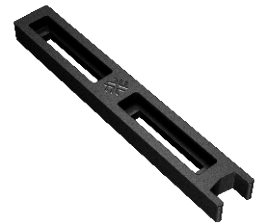
**CC0221 w/wo**  
w - With Nut | ₹50/- pc  
wo - W/O Nut | ₹40/- pc



**CCS252701**  
SGU | ₹60/- pc



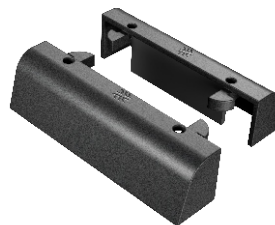
**PHIC02**  
Interlock Cap | ₹12/- pc



**PHAH02**  
Antilift Handle | ₹12/- pc



**PHNRV**  
Non Return Valve | ₹10/- pc



**PHWDC02 w/wo**  
w - WDC (Flap) | ₹12/- pc  
wo - WDC (W/o Flap) | ₹10/- pc



**PHDP01**  
Fiber Dust Pad | ₹22/- pc



**SSL Corner**  
₹2/- pc



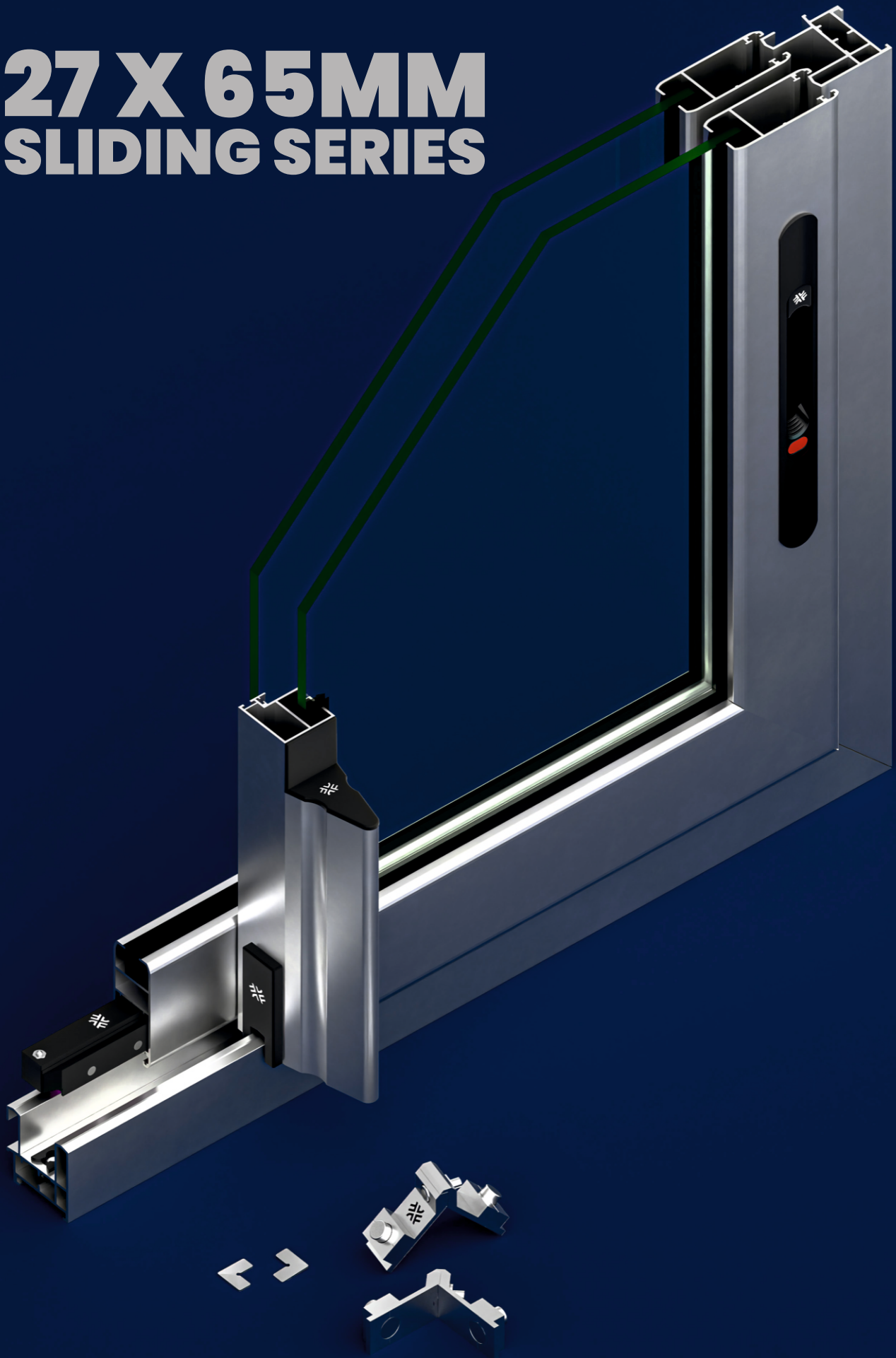
**EPDM**  
U EPDM | ₹320/- kg



**Woolpile**  
6.8x5mm Non Silicon | ₹2.5/- mtr  
6.8x5mm Silicon | ₹8/- mtr  
6.8x5mm Silicon+Fin | ₹10.5/- mtr



# 27 X 65MM SLIDING SERIES





**R2701**  
1x1 - 40kg/pair | ₹40/- pc



**R2702**  
2x2 - 60kg/pair | ₹70/- pc



**R2703**  
2x4 - 80 kg/pair | ₹100/- pc



**R2704**  
4x4 - 90kg/pair | ₹150/- pc



**R2705**  
4x8 - 140kg/pair | ₹180/- pc



**R2706**  
Adj. 2x2 - 60kg/pair | ₹150/- pc



**R2707**  
Adj. 2x4 - 90kg/pair | ₹180/- pc



**R2708**  
Alum. Adj. 2x4-120kg/pair | ₹220/- pc



**CC0221 w/wo**  
w - With Nut | ₹50/- pc  
wo - W/O Nut | ₹40/- pc



**CC0422**  
Adj. with Nut | ₹50/- pc



**CCC252701**  
Casting Cleat | ₹44/- pc



**CCS252701**  
SGU | ₹60/- pc



## 27X65MM SLIDING SERIES



### CCS2702

DGU | ₹62/- pc



### CCS252703

Short head SGU | ₹60/- pc



### CCS252704

Short head (Cap) | ₹50/- pc



### PHIC03

Interlock Cap Small | ₹8/- pc



### PHIC04

Interlock Cap Big | ₹12/- pc



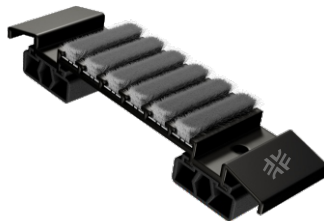
### PHLG02

Lock Guide | ₹8/- pc



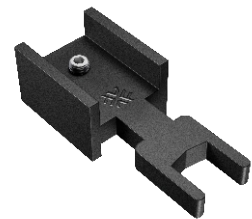
### PHDP02

Anticapillary Pad Fiber | ₹22/- pc



### PHDPA23

Anticapillary Pad Alu. | ₹44/- pc



### PHARG

Anti rattling Guide | ₹14/- pc



### PHAH03

Antilift Handle | ₹12/- pc



### PHNRV

Non Return Valve | ₹10/- pc



### PHDSC

Drain Slot Cover | ₹2/- pc



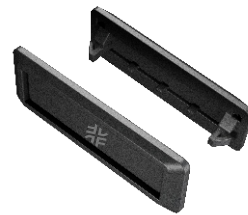
**PHLGS01**

Lock Guide Stopper | ₹16/- pc



**PHWDC02 w/wo**

w - WDC (Flap) | ₹12/- pc  
wo - WDC (W/o Flap) | ₹10/- pc



**PHWDC03**

WDC Slim | ₹14/- pc



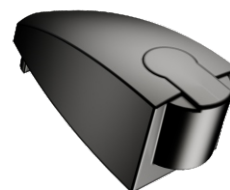
**PHUG03**

Top u Guide | ₹6/- pc



**PHBSP**

Bump Stopper plastic | ₹50/- pc



**PHBSC**

Bump Stopper Casting | ₹80/- pc



**PHKPA2735**

KPA Interlock Cap | ₹20/- pc



**PHFW03**

Frame wing connector | ₹8/- pc



**SSL Corner**

₹2/- pc



**PHSC**

8mm Hole cap | ₹1/- pc  
10mm hole cap | ₹1.2/- pc  
12mm hole cap | ₹1.5/- pc



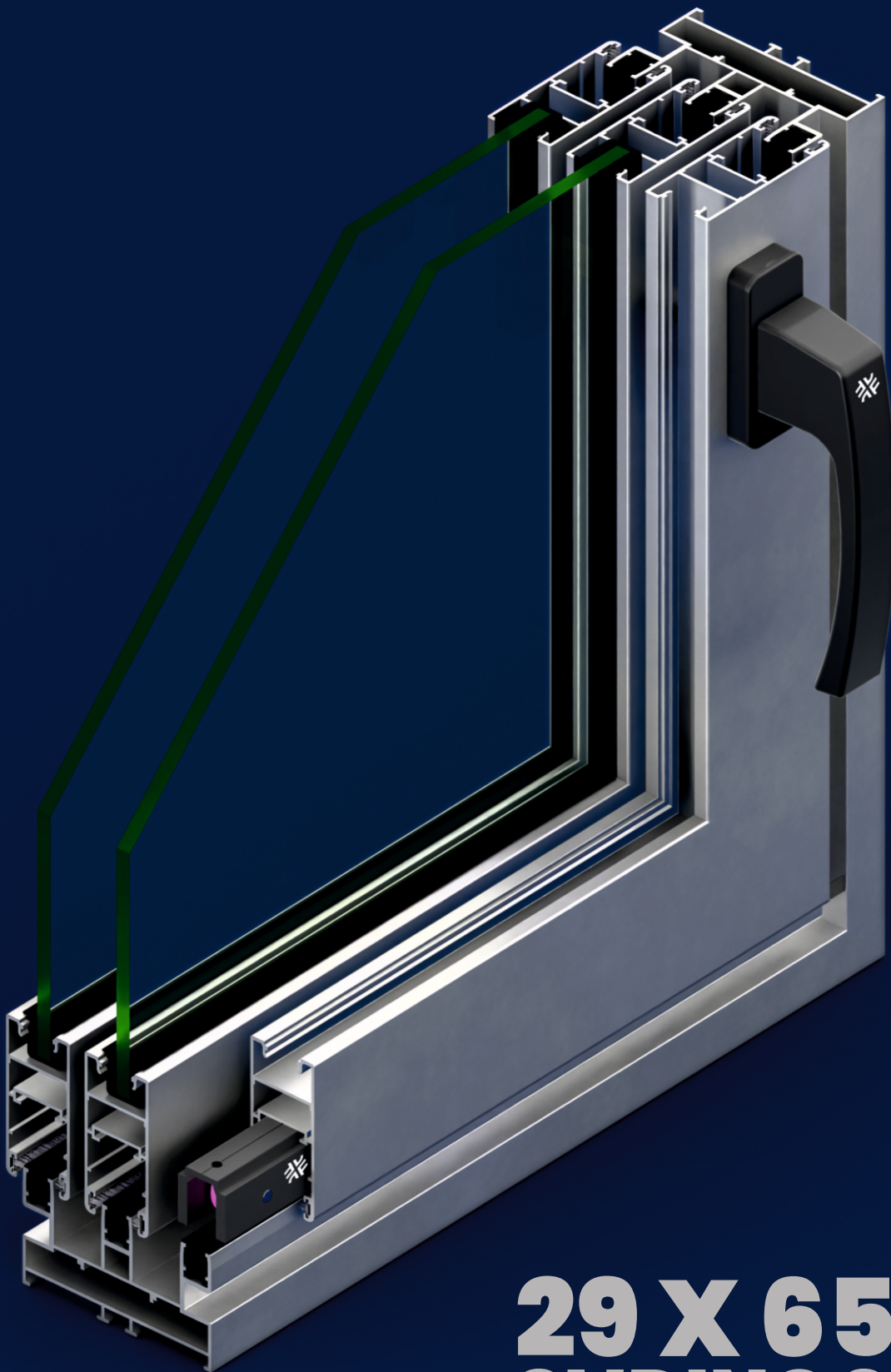
**EPDM**

Press EPDM | ₹320/- kg  
U EPDM | ₹320/- kg  
Interlock EPDM | ₹320/- kg



**Woolpile**

6.8x6mm Non Silicon | ₹2.7/- mtr  
6.8x6mm Silicon | ₹8.5/- mtr  
6.8x6mm Silicon with fin | ₹11.5/- mtr



**29 X 65MM  
SLIDING SERIES**



### R2901 2x4 / 3x6

2x4 - 80 kg/pair | ₹130/- pc  
3x6 - 120 kg/pair | ₹160/- pc  
Aluminium Body Teflon Wheel



### 2901SS 2x4 / 3x6

2x4 - 140 kg/pair | ₹260/- pc  
3x6 - 180 kg/pair | ₹300/- pc  
Aluminium Body SS Wheel



### R2902 2x4 / 4x8

2x4 - 80 kg/pair | ₹180/- pc  
4x8 - 180 kg/pair | ₹360/- pc  
Euro Groove Aluminium Body



### R2902SS 2x4 / 4x8

2x4 - 250 kg/pair | ₹300/- pc  
4x8 - 450kg/pair | ₹640/- pc  
Euro Groove Alu Body SS Wheel



### R2903 | 15x24mm ADJ SS Body

1 Wheel - 50 kg/pair | ₹80/- pc  
2 Wheel - 80 kg/pair | ₹150/- pc  
4 Wheel - 160 kg/pair | ₹310/- pc



### R2905 2x2 / 2x4

2x2 - 60 kg/pair | ₹150/- pc  
ADJ Roller



### R2905 2x2 / 2x4

2x4 - 90 kg/pair | ₹180/- pc  
ADJ Roller



### CC0225 w/wo

w - With Nut | ₹54/- pc  
wo - W/O Nut | ₹44/- pc



### CC0425

Adjustable with Nut  
₹44/- pc



### CCS2901

Slim Cleat 25x10x50mm  
₹50/- pc



### PHAGS01

Antilift Lock Guide Stopper  
₹26/- pc



### PHIC05

Interlock Cap | ₹16/- pc



## 29 X 65MM SLIDING SERIES



### PHDP03

Anti Cappillary Pad Fiber  
₹22/- pc



### PHNRV

Non return valve | ₹10/- pc



### PHBSC

Bump Stopper Casting | ₹80/- pc



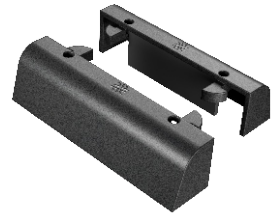
### PHBSP

Bump Stopper Plastic | ₹50/- pc



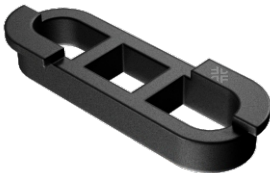
### PHWDC03

WDC Slim | ₹14/- pc



### PHWDC02 w/wo

w - WDC (Flap) | ₹12/- pc  
wo - WDC (W/o Flap) | ₹10/- pc



### PHDSC

Drain Slot Cover | ₹2/- pc



### WLA09

Plastic Polyamide Rod | ₹150/- mtr



### PHSC

10mm | ₹1.2/- pc  
12mm | ₹1.5/- pc



### SS L Corner

₹2/- pc



### EPDM

Press EPDM | ₹320/- kg  
U EPDM | ₹320/- kg  
Interlock EPDM | ₹320/- kg

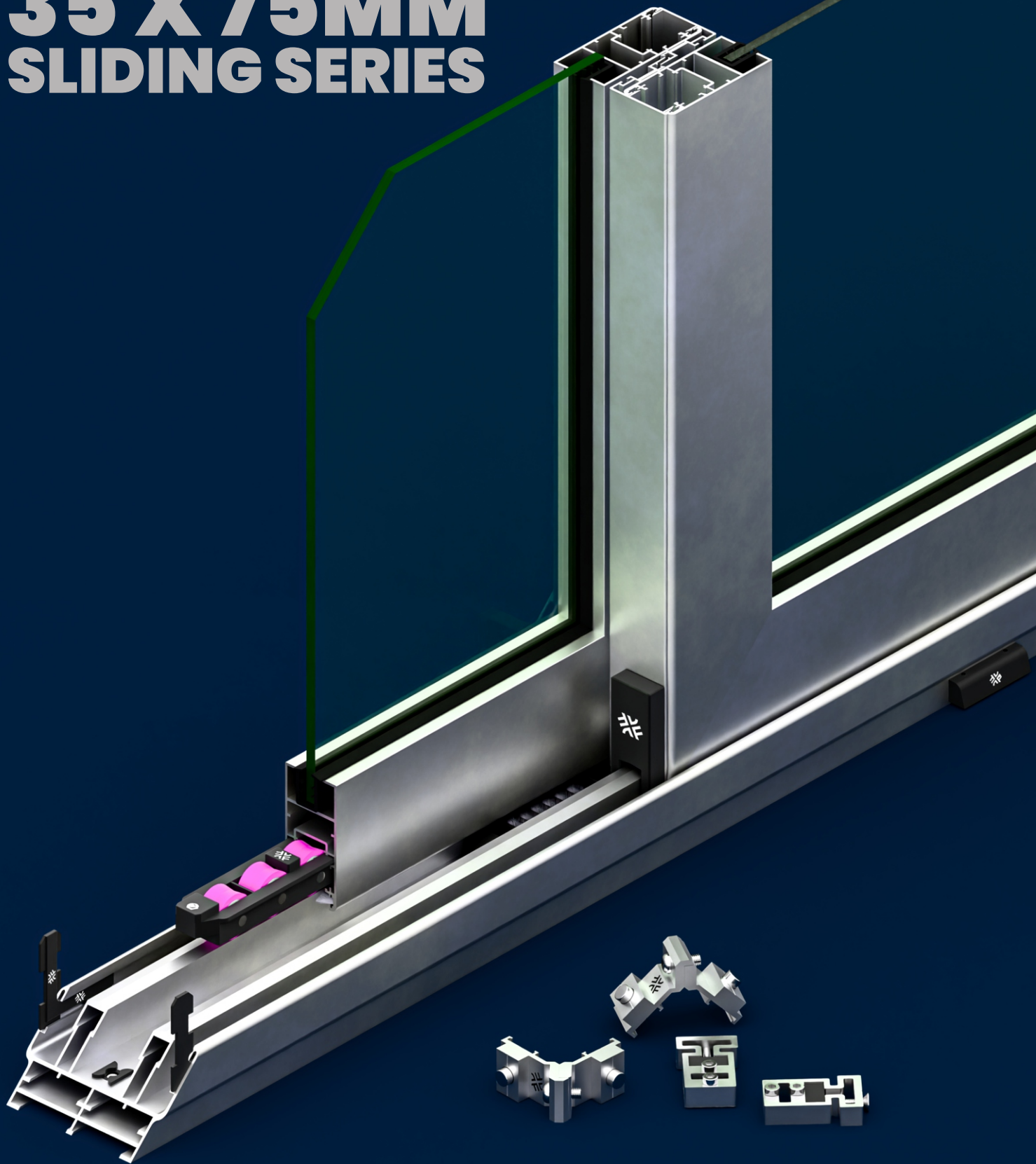


### Woolpile

6.8x6mm Non Silicon | ₹2.7/-mtr  
6.8x6mm Silicon | ₹8.5/-mtr  
6.8x6mm Silicon with fin | ₹11.5/-mtr



# 35 X 75MM SLIDING SERIES





## 35 X 75MM SLIDING SERIES



### R3501

2x4 - 80 kg/pair | ₹180/- pc



### R3502N

4x8 - 180 kg/pair | ₹260/- pc



### R3503N

Adj. 2x4 - 80 kg/pair | ₹260/- pc



### R3504

Alu Adj. 2x4 - 100 kg/pair | ₹300/- pc



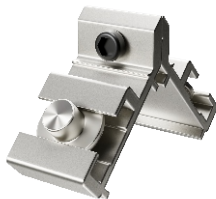
### R3505

SS Adj. 4x8 - 250 kg/pair | ₹500/- pc



### CC0327

Solid Cleat (Leg) | ₹70/- pc



### CC0527

Adjustable (Leg) | ₹70/- pc



### CCS3501

Slim Cleat SGU | ₹80/- pc



### CCS3502

Slim Cleat DGU | ₹90/- pc



### CCS3503

Slim Cleat SGU+DGU | ₹90/- pc



### PHLG04

Lock Guide | ₹10/- pc



### PHIC06

Interlock Cap | ₹14/- pc



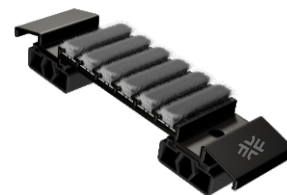
**PHUG04**

Top u Guide | ₹10/- pc



**PHDP03**

Dust Pad Fiber | ₹30/- pc



**PHDPA32**

Alu. Dust Pad | ₹56/- pc



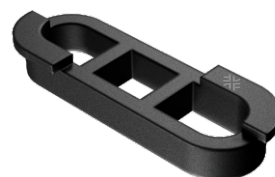
**PHAH04**

Antilift Handle | ₹14/- pc



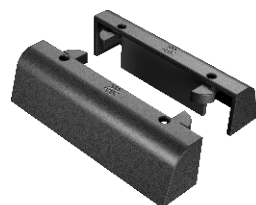
**PHNRV**

Non Return Valve | ₹10/- pc



**PHDSC**

Drain slot cover | ₹2/- pc



**PHWDC02 w/wo**

w - WDC (Flap) | ₹12/- pc  
wo - WDC (W/o Flap) | ₹8/- pc



**PHWDC03**

WDC Slim | ₹14/- pc



**PHLGS02**

Lock Guide Stopper | ₹20/- pc



**PHBSP**

Bump Stopper plastic | ₹50/- pc



**PHBSC**

Bump Stopper Casting | ₹80/- pc



**PHKPA2735**

KPA Interlock Cap | ₹20/- pc



## 35 X 75MM SLIDING SERIES



### PHFW02

Frame wing connector | ₹8/- pc



### SS L Corner

₹3/- pc



### PHSC

10mm | ₹1.2/- pc  
12mm | ₹1.5/- pc



### EPDM

U EPDM | ₹320/- kg  
Interlock EPDM | ₹320/- kg  
Track EPDM | ₹320/- kg



### Woolpile

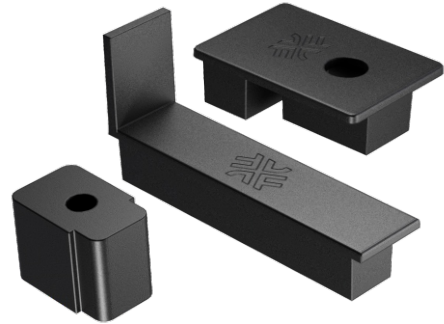
6.8x7mm Silicated | ₹9/- mtr  
6.8x7x7mm Silicated + Fin | ₹12/- mtr  
6.8x8mm Silicated | ₹10/- mtr



**Minimal Series Roller**

V14 Minimal Roller 200kg/pair ₹400/- pc	V22 Minimal Roller 250kg/pair ₹1400/- pc
---	--

CAN ALSO BE CUSTOMIZE AS PER YOUR PROFILE



**Minimal Series Plastic Accessories**

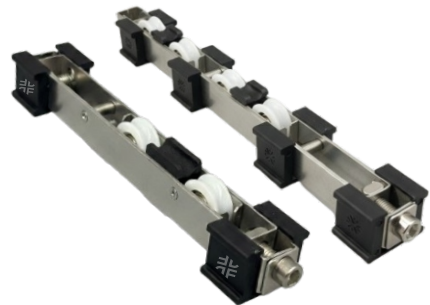
Bolt Stopper ₹20/- pc	V14   V22 KPA Cap ₹40/-pc	Bolt Guide ₹40/-pc
--------------------------	---------------------------------	-----------------------

CAN ALSO BE CUSTOMIZE AS PER YOUR PROFILE



**RGS31**

31mm Gulf Series Roller  
Adj. 2x2 - 80kg/pair | ₹190/- pc  
Adj. 4x4 - 160kg/pair | ₹390/-pc



**RGS35**

35mm Gulf Series Roller  
Adj. 2x2 - 80kg/pair | ₹190/- pc  
Adj. 4x4 - 160kg/pair | ₹390/-pc



**R11401**

1 1/4" Indian Series  
1x1 - 40kg/pair  
₹70/- pc



**R3001**

30 mm Indian Sereis  
Short Body - 40kg/pair  
₹70/- pc



**R3002**

30 mm Indian Sereis  
Sound Proof - 50kg/pair  
₹100/- pc



## 18 X 50 MM SLIDING SERIES



### 625 Roller

R1801 | 30 kg/pair | ₹22/- pc  
R1801A | SS Pin 30 kg/pair | ₹24/- pc  
R1802 | NSK Japan SS Pin  
30 kg/pair ₹28/- pc



### 626 roller

R1803 | 40kg/pair | ₹24/- pc  
R1803A | SS Pin 30 kg/pair | ₹26/- pc  
R1804 | NSK Japan SS Pin  
40 kg/pair ₹30/- pc



### R1805

Big Body Roller -  
30kg/pair | ₹44/- pc



### Metal Adjustable

DF-R1806 | 14.5mm - 30kg/pair | ₹26/- pc  
DF-R1807 | 16mm - 30kg/pair | ₹28/- pc



### R1808

Camel Roller  
30kg/pair | ₹22/- pc



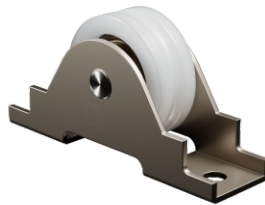
### R1809

Metal Roller Long-  
40kg/pair | ₹30/- pc



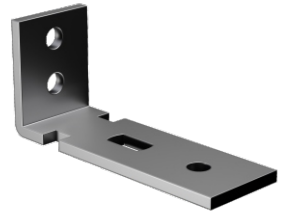
### R1810

Metal Roller Long -  
60kg/pair | ₹50/- pc



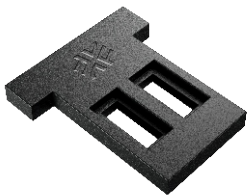
### R1811

Metal Roller -  
30 kg/pair | ₹22/- pc



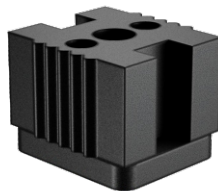
### CC23

L Jointer | ₹7/- pc



### PHTP18

Top pin | ₹4/- pc



### PHHC18

H Corner | ₹4/- pc



### Woolpile

6.8x5mm Non Silicon | ₹2.5/- mtr  
6.8x5mm Silicon | ₹7.5/- mtr



### Roller 1x1

R1002 | 40kg/pair | ₹40/- pc  
 R1003 | SS Pin 40kg/pair | ₹44/- pc  
 R1004 | NSK-SS 45kg/pr | ₹50/- pc



### R1001

Metal 1x2 - 60kg/pair | ₹70/- pc



### CC24

L jointer | ₹9/pc



### PHTP1

Top pin | ₹5/pc



### PHSC

PHSC08 | 8mm | ₹1/- pc  
 PHSC10 | 10mm | ₹1.2/- pc



### Woolpile

6.8x5mm Non Silicated | ₹2.5/- mtr  
 6.8x5mm Silicated | ₹7.5/- mtr



### EPDM

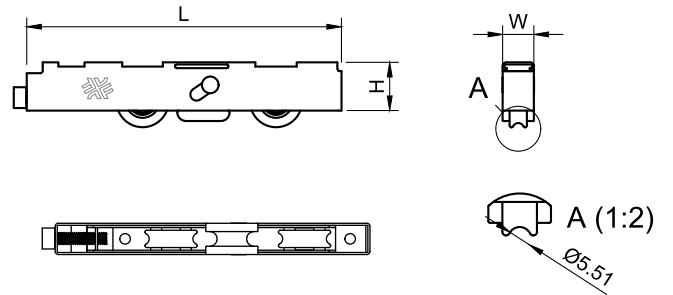
U EPDM | ₹320/- kg



# EURO GROOVE ROLLER | SS RAIL | HOLE CAP



## ADJUSTABLE EURO GROOVE SS BODY ROLLER



CODE	DESCRIPTION	W (mm)	H (mm)	L (mm)	WEIGHT CAPACITY	PRICE
RSS15172	2 Wheel U Groove Roller	15	17	150	70kg/pair	₹160/-
RSS15174	4 Wheel U Groove Roller	15	17	240	130kg/pair	₹340/-
RSS151202	2 Wheel U Groove Roller	15	20	150	80kg/pair	₹160/-
RSS151204	4 Wheel U Groove Roller	15	20	240	140kg/pair	₹340/-
RSS151241	1 Wheel U Groove Roller	15	24	85	50kg/pair	₹80/-
RSS151242	2 Wheel U Groove Roller	15	24	150	80kg/pair	₹150/-
RSS151244	4 Wheel U Groove Roller	15	24	240	160kg/pair	₹310/-



## SS U RAIL

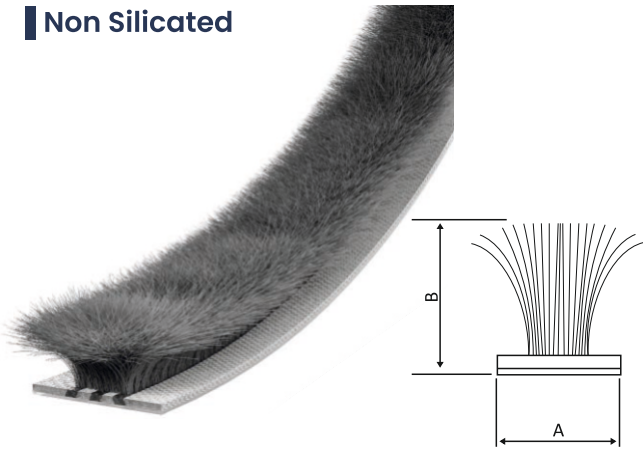
SIZE 5x13mm | ₹190/- mtr

## PHSC

HOLE CAP  
 08mm | ₹1/- pc  
 10mm | ₹1.2/- pc  
 12mm | ₹1.5/- pc  
 19mm | ₹5/- pc  
 20mm | ₹6/- pc  
 22mm | ₹8/- pc



## Non Silicated

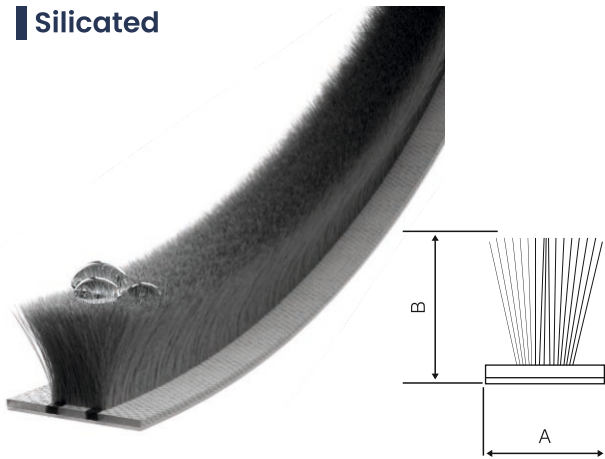


### Available Size :

A	B	Mtr	PRICE (Mtr)
6.8	5	245	₹2.36/-
6.8	6	225	₹2.7/-
6.8	7	200	₹3.5/-
6.8	8	200	₹4/-

Color : Black | Grey

## Silicated

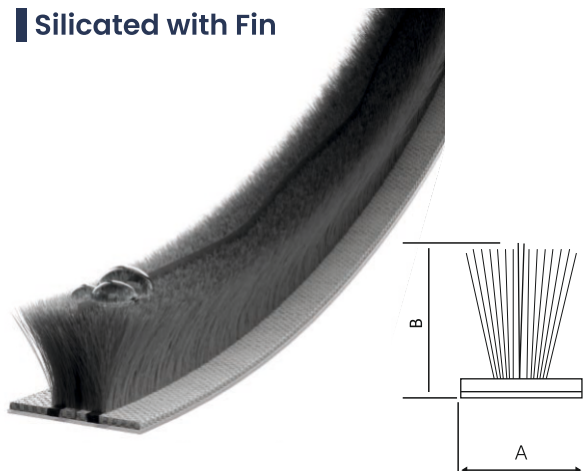


### Available Size :

A	B	Mtr	PRICE (Mtr)
6.8	5	225	₹8.5/-
6.8	6	225	₹9.5/-
6.8	7	225	₹10.5/-
6.8	8	225	₹11.5/-
6.8	9	225	₹12.5/-
6	6	225	₹10.5/-

Color : Grey

## Silicated with Fin



### Available Size :

A	B	Mtr	PRICE (Mtr)
6.8	5	200	₹11.5/-
6.8	6	200	₹12.5/-
6.8	7	200	₹13.5/-
6.8	8	200	₹15/-
6.8	9	200	₹16.5/-
6	6	200	₹13.5/-

Color : Grey



# 40MM CASEMENT SERIES





### WH4001 2D/3D

2D - 80 kg/pr | ₹180/- pc  
3D - 100 kg/pr | ₹260/- pc



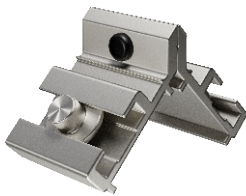
### WH4002 2D/3D

2D - 90 kg/pr | ₹220/- pc  
3D - 110 kg/pr | ₹320/- pc



### CC0335

Solid Cleat (Leg) | ₹70/- pc



### CC0535

Adj. Cleat (Leg) | ₹70/- pc



### CCC4001

Casting Cleat | ₹60/- pc



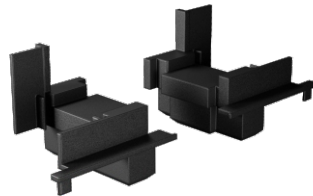
### DFMC A/B

A-14mm for window | ₹50/- pc  
B-29mm for Door | ₹70/- pc



### DFMC

Casting Mullion | ₹50/- pc



### PHMC40

Mullion Cap | ₹180/- pr



### PHUB

Uplift Block | ₹20/- pc



### SS L Corner

₹3/- pc



### TPE

Round 4.5mm | ₹23/- mtr



### EPDM

Press EPDM | ₹320/- kg



# 50MM CASEMENT SERIES





**WH5001**

For Window | 80 kg/pr | ₹180/- pc



**WH5002**

For Door | 120 kg/pr | ₹450/- pc



**CC07**

For Window Shutter | ₹130/- pc



**CC0240**

For Window Frame | ₹76/- pc



**CC08**

For Door Shutter | ₹150/- pc



**CCC5001**

For Door Shutter | ₹300/- pc



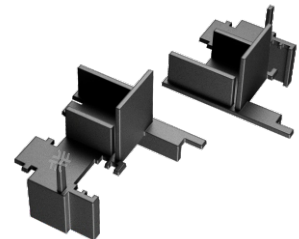
**CC09**

For Door FRAME | ₹160/- PC



**MCEURO**

14mm | ₹50/- pc



**PHMC50**

Door Mullion Cap ₹120/- pr



**SBA**

Automatic 6" | ₹200/- PC



**SBM A/B/C**

A-Manual | 250 MM ₹220/- pc  
B-Manual | 540 MM ₹320/- pc  
C-Manual | 845 MM ₹640/- pc



**EPDM | TPE**

Press EPDM ₹320/- Kg



# **45MM | 52MM CASEMENT SERIES**



### WH5201J 2D/3D

2D - 80 kg/pr | ₹180/- pc  
3D - 120 kg/pr | ₹260/- pc



### WH5202NJ 2D/3D

2D - 80 kg/pr | ₹180/- pc  
3D - 120 kg/pr | ₹260/- pc



### WH5203

For Door | 100 kg/pr | ₹260/- pc



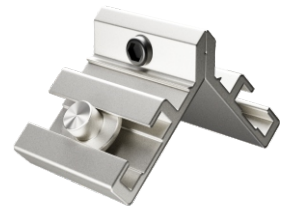
### WH5204

Universal | 90 kg/pr | ₹200/- pc



### CC0240 w/wo

w-With Nut | ₹80/- pc  
wo-W/O Nut | ₹70/- pc



### CC0440

Adj. with Nut | ₹80/- PC



### DFMC

9.5mm | ₹50/- pc



### PHUB

Uplift Block | ₹20/- pc



### PHSC

10mm | ₹1.2/- pc  
12mm | ₹1.5/- pc



### TPE

Round 4.5mm | ₹23/- mtr



### EPDM

Press EPDM | 320/- kg



### Door seal

Door Seal | ₹50/- ft.



## Z CASEMENT SERIES



### WHZ01 (M)

85kg/pr | ₹180/- pr



### WHZ02 (B)

90kg/pr | ₹220/- pr



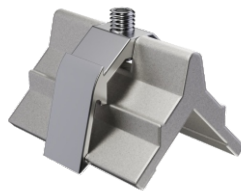
### WHZ03

2.5" | 85kg/pr | ₹280/-pr  
4" | 95 kg/pr | ₹500/-pr



### WHZ04

Flat Hinges | 80kg/pr | ₹200/- pr



### CCFC21

Frame Cleat | ₹ 44/- pcs



### TPE

Round 5mm | ₹23/- mtr

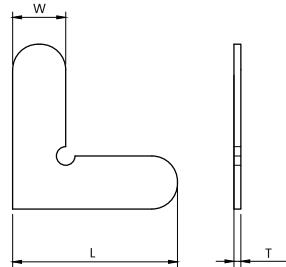


### EPDM

Press EPDM | ₹320/- kg



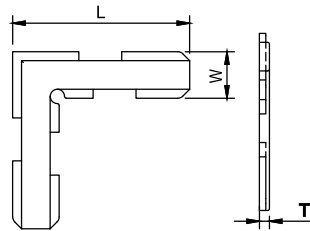
## SS L CORNER



### Available Size :

CODE	W (mm)	L (mm)	T (mm)	PRICE
SSLP4.2	4.2	26	1	₹3/-
SSLP4.6	4.6	26	0.7	₹3/-
SSLP6.2	6.2	16.8	1.3	₹2/-
SSLP7.2	7.2	16.8	0.9	₹2/-
SSLP7.25	7.25	16.8	1.9	₹2/-
SSLP7.3	7.3	26	1.2	₹3/-
SSLP7.30.8	7.3	26	0.8	₹3/-
SSLP10.5	10.5	32	1.3	₹4/-

## FRAME WING CONNECTOR



### Available Size :

CODE	W (mm)	L (mm)	T (mm)	PRICE
PHFW01	13	50	2.8	₹8/-
PHFW02	15.2	55	2.3	₹8/-
PHFW03	22.5	60	2.5	₹8/-



## EPDM RUBBER

Steam Cured | ₹320/- kg

Micro Wave Cured | ₹420/- kg

AVAILABLE FOR ALL WINDOW GROOVE  
CAN BE CUSTOMIZE AS PER DRAWING



# CONCEALED LOCKS AND ACCESSORIES





**WL01**  
Concealed Lock Small | ₹220/- pc



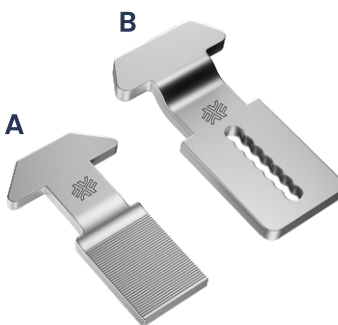
**WL02**  
Concealed Lock | ₹260/- pc



**WL03**  
Concealed Lock with key | ₹500/- pc



**WL04**  
Indilock | ₹240/- pr



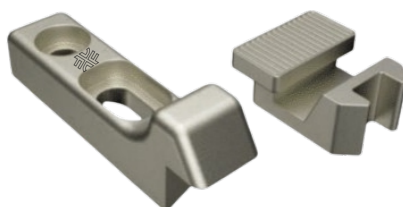
**WLA01 A/B**  
A-Nib SS304 | ₹30/- pc  
B-Nib SS304 | ₹30/- pc



**WLA02**  
Casting Receiver Slim | ₹50/- pc



**WLA03**  
Casting receiver | ₹50/- pc



**WLA17**  
Duck hook | ₹70/- pc



**WLA04 A/B/C**  
A-8mm | ₹30/- pc  
B-11mm | ₹30/- pc  
C-15mm | ₹30/- pc



# MULTIPOINT HANDLES AND ACCESSORIES





**SMH01**  
Eco (Rod) | ₹260/- pc



**SMH02**  
Premium (Rod) | ₹600/- pc



**SMH03**  
With Key (Rod) | ₹500/- pc



**SMH04**  
Crank Handle (Rod) | ₹300/- pc



**SMH05**  
Crank Handle with key (Rod)  
₹620/- pc



**SMH06**  
Short Neck Handle (Rod)  
₹300/- pc



**SMH07**  
Pop up handle (Rod)  
₹400/- pc



# MULTIPOINT (ROD) LOCKING ACCESSORIES

## WLA05

Metal Espag



CODE	SIZE	PRICE
WLA05-0400	400mm	₹320/- pc
WLA05-0600	600mm	₹340/- pc
WLA05-0800	800mm	₹360/- pc
WLA05-1000	1000mm	₹380/- pc
WLA05-1200	1200mm	₹400/- pc
WLA05-1400	1400mm	₹420/- pc
WLA05-1600	1600mm	₹440/- pc
WLA05-1800	1800mm	₹460/- pc



## WLA19 A/B

A - MS with Zinc plating | ₹10/- pc  
B - SS304 with polish | ₹30/- pc

## WLA07

Guide Adaptor | ₹10/- pc

## WLA08

Receiver with Counter Plate  
₹50/- pc



## M5/M8 Gear Box

Gear Box and accessories  
for Minimal system

## LOCKING GEAR BOX

EURO GROOVE LOCKING GEAR BOX  
FOR OPENABLE SYSTEM



**MH08**  
Eco (Fork) | ₹400/- pc



**MH09**  
Premium (Fork) | ₹600/- pc



**MH09A**  
Premium with key (Fork) | ₹1100/- pc



**MH10**  
Crank Handle (Fork) | ₹400/- pc



**MH15**  
Premium (Fork)  
₹800/- pc



**MH11**  
Detachable Handle  
Base - ₹680/- pc | Handle - ₹280/- pc



## MULTIPOINT HANDLES (FORK)



### MH12

Two Point Handle | ₹700/- pc



### MH12A

Two point handle with key | ₹1100/- pc



### Metro Handle

Mh13 | Slide 7 inch | ₹800/- pc

MH13A | Slide 12 inch | ₹ 1100/- pc



### Tram Handle

Mh14 | Push Button 7 inch | ₹ 800/- pc

MH14A | Push Button 12 inch | ₹ 1100/- pc



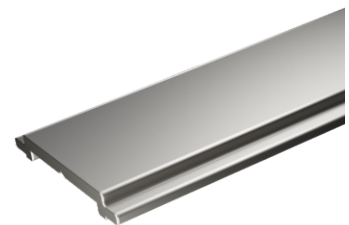
### WLA13

Plastic Polymide rod 15-20  
Euro groove | ₹94/- mtr



### WLA14

Aluminium Polymide rod  
Euro groove | ₹200/- mtr



### WLA15

Aluminium Polymide rod (R40)  
₹200/- mtr



## WLA09

Aluminum Sliding Espag



CODE	SIZE	PRICE
WLA09-0400	400mm	₹200/- pc
WLA09-0600	600mm	₹220/- pc
WLA09-0800	800mm	₹240/- pc
WLA09-1000	1000mm	₹260/- pc
WLA09-1200	1200mm	₹280/- pc
WLA09-1400	1400mm	₹300/- pc
WLA09-1600	1600mm	₹380/- pc
WLA09-1800	1800mm	₹420/- pc

## WLA10

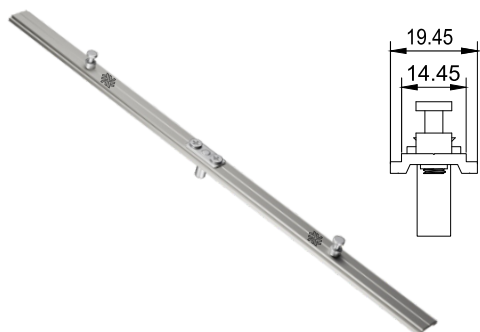
Aluminum Openable Espag



CODE	SIZE	PRICE
WLA10-0400	400mm	₹220/- pc
WLA10-0600	600mm	₹240/- pc
WLA10-0800	800mm	₹260/- pc
WLA10-1000	1000mm	₹280/- pc
WLA10-1200	1200mm	₹300/- pc
WLA10-1400	1400mm	₹320/- pc
WLA10-1600	1600mm	₹400/- pc
WLA10-1800	1800mm	₹440/- pc

## WLA11

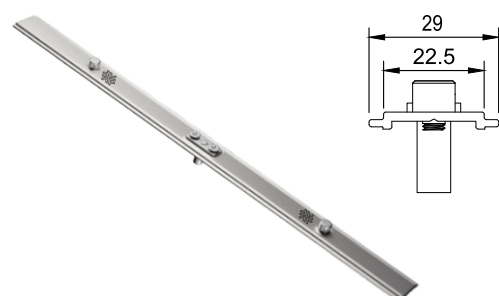
Euro Polymide Espag



CODE	SIZE	PRICE
WLA11-0600	400mm	₹300/- pc
WLA11-0800	600mm	₹320/- pc
WLA11-1000	1000mm	₹340/- pc
WLA11-1200	1200mm	₹360/- pc
WLA11-1800	1800mm	₹500/- pc

## WLA12

R40 Polymide Espag



CODE	SIZE	PRICE
WLA12-0600	600mm	₹300/- pc
WLA12-0800	800mm	₹320/- pc
WLA12-1000	1000mm	₹340/- pc
WLA12-1200	1200mm	₹360/- pc
WLA12-1800	1800mm	₹500/- pc



## MULTIPOINT LOCKING ACCESSORIES



### WLA16

Nib Holder+J Nib | ₹130/- pc



### WLA17

Center Connector | ₹120/- pc



### WLA18

D Striker | ₹48/- pc



### WLA19

Duck Hook Striker | ₹48/- pc



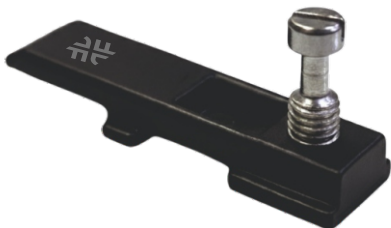
### WLA20

Slim Striker 7.4mm | ₹48/- pc



### WLA21

Duck hook | ₹48/- pc



### WLA22

Sliding Multipoint Locking device | ₹100/- pc



### WLA23

Sliding Multipoint Locking device | ₹110/- pc



**WLA24**

Sliding Multipoint Locking Receiver | ₹84/- pc



**WLA25 A/B**

A - MS with Zinc plating | ₹10/- pc  
B - SS304 with polish | ₹30/- pc



**WLA26**

Receiver with Counter Plate ₹50/- pc



**WLA27**

Openable Receiver Casting | ₹30/- pc



**WLA28**

Openable Receiver Nylon | ₹8/- pc



**WLA29**

Euro groove Casting Receiver grub screw ₹36/- pc



**WLA31**

Two point locking accessories ₹300/- set



**WLA32 A/B**

A - 6.5mm - ₹50/- pc  
B - 8.5mm - ₹50/- pc



## CASEMENT LOCKING HARDWARE



### SPH01

Roller Handle | ₹220/- set  
Roller Handle Accessories (Extra) | ₹100/- set



### SPH02

Bullet Handle | ₹260/- set  
Bullet Handle Accessories (Extra) | ₹110/- set



### SPH03

Single Point Handle with key | ₹500/- set



### SPH04

Slim Single point handle | ₹220/- set



### SPH05

American Handle 6" | ₹130/- pc



### SPH06

Custodian Lock | 40mm / 52mm / Z series  
Lock - ₹190/- set | Key - ₹40/- pc



### SBA

Automatic 6" | ₹250/- Set



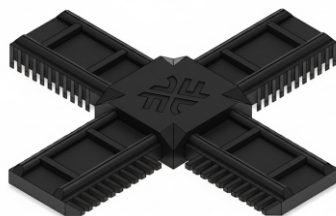
### SBM

Manual | 250mm - ₹220/- pc  
540mm - ₹320/- pc | 845mm - ₹640/- pc



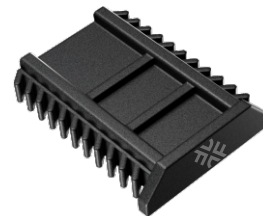
## GBSGU

Georgian Bar SGU | ₹46/- Ft.  
Powder Coating (Extra) | ₹5/- Ft.



## GBSGU01

Connector SGU | ₹32/- pc



## GBSGU02

End Cap | ₹10/- pc



## GBDGU

Georgian Bar DGU | ₹46/- Ft.  
Powder Coating (Extra) | ₹5/- Ft.



## GBDGU01

Connector DGU | ₹32/- pc



## GBDGU02

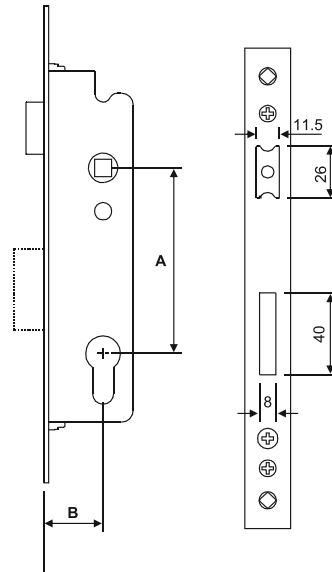
End Cap | ₹10/- pc



# MORTISE LOCK AND ACCESSORIES

## ML SP/MP

Single / Multi point Lock Body

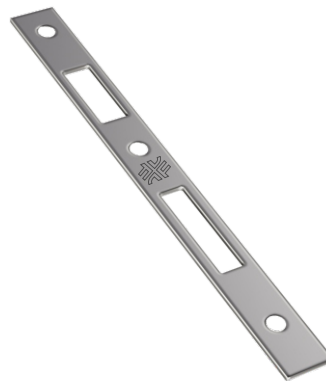


CODE	PRODUCT DESCRIPTION	A	B	SUITABLE SERIES	PRICE
MLSP8520	8520 Single Point Lock Body	85mm	20mm	40mm	₹700/-pc
MLSP8525	8525 Single Point Lock Body	85mm	25mm	45mm	₹740/-pc
MLSP8530	8530 Single Point Lock Body	85mm	30mm	52mm	₹780/-pc
MLSP8535	8535 Single Point Lock Body	85mm	35mm	50mm	₹890/-pc
MLSP8530	8530 Multi Point Lock Body	85mm	30mm	50mm	₹1800/-pc



## WLA35

Frame plate 40mm series | ₹100

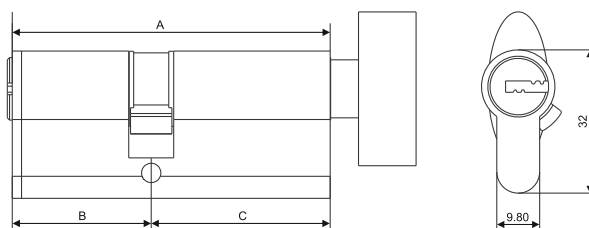
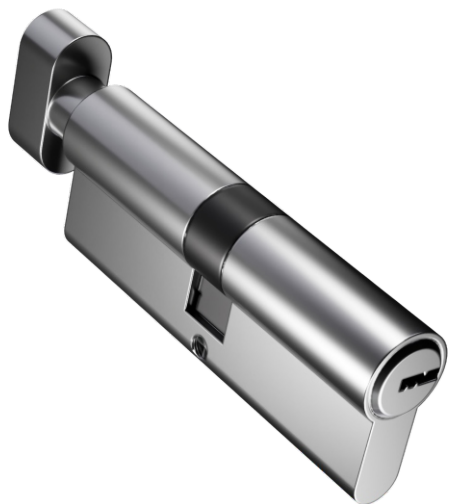


## WLA37

Frame plate 52mm series | ₹ 100



**OSK / BSK**  
Mortise Lock Cylinder



CODE	PRODUCT DESCRIPTION	A	B	C	SUITABLE SERIES	PRICE
OSK60	60mm One Side Knob One Side Key	60mm	30mm	30mm	40mm	₹780/-pc
OSK70	70mm One Side Knob One Side Key	70mm	35mm	35mm	45mm	₹820/-pc
OSK80	80mm One Side Knob One Side Key	80mm	40mm	40mm	52mm	₹860/-pc
OSK251045	25-10-45 One Side Knob One Side Key	80mm	25mm	45mm	50mm	₹920/-pc
OSK251025	45-10-25 One Side Knob One Side Key	80mm	45mm	25mm	50mm	₹920/-pc
BSK60	60mm Both side key	60mm	30mm	30mm	40mm	₹780/-pc
BSK70	70mm Both side key	70mm	35mm	35mm	45mm	₹820/-pc
BSK80	80mm Both side key	80mm	40mm	40mm	52mm	₹860/-pc



**MLH03**

Mortise Handle | ₹980/- set

**MLH01**

Mortise Handle | ₹880/- set

**MLH02**

Mortise Handle | ₹980/- set



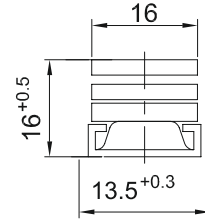
# FRICITION HINGES





## FH135

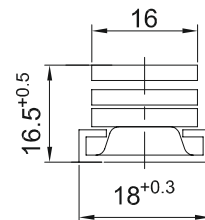
13.5 mm Base Hinges



CODE	SIZE	BAR THICKNESS	STACK HEIGHT	WINDOW HEIGHT	WINDOW WIDTH	WINDOW WEIGHT	OPENING ANGLE	SS304	UNIT
FH13510	10"	2.5	15.5	1500	400	15	90°	₹600/-	PAIR
FH13512	12"	2.5	16	1500	450	18	90°	₹640/-	PAIR
FH13516	16"	2.5	16	1500	550	28	90°	₹840/-	PAIR

## FH18

18 mm Base Hinges



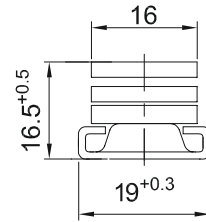
CODE	SIZE	BAR THICKNESS	NO OF BAR	STACK HEIGHT	WINDOW HEIGHT	WINDOW WIDTH	WINDOW WEIGHT	OPENING ANGLE	SS304	UNIT
FH1810	10"	2	4	15	1000	400	20	90°	₹460/-	PAIR
FH1812	12"	2	4	15	1200	400	24	90°	₹530/-	PAIR
FH1814	14"	2.5	4	15	1500	600	28	90°	₹670/-	PAIR
FH1816	16"	2.5	4	15.5	1500	800	34	90°	₹720/-	PAIR
FH1818	18"	2.5	4	15.5	1500	900	38	90°	₹820/-	PAIR
FH1820	20"	3	5	15.5	1500	950	44	90°	₹1080/-	PAIR
FH1824	24"	3	6	16.5	1500	1000	48	90°	₹1430/-	PAIR



# FRICTION HINGES

## FH19

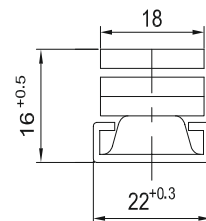
19 mm Base Hinges



CODE	SIZE	BAR THICKNESS	NO OF BAR	STACK HEIGHT	WINDOW HEIGHT	WINDOW WIDTH	WINDOW WEIGHT	OPENING ANGLE	SS302	UNIT
FH1910	10"	2	4	14	1000	250	20	90°	₹230/-	PAIR
FH1912	12"	2	4	14	1200	250	22	90°	₹250/-	PAIR
FH1914	14"	2.5	4	14.5	1200	280	24	90°	₹320/-	PAIR
FH1916	16"	2.5	4	15	1200	310	30	90°	₹370/-	PAIR
FH1918	18"	2.5	4	15	1500	800	36	90°	₹484/-	PAIR
FH1920	20"	2.5	5	15.5	1500	900	40	90°	₹800/-	PAIR
FH1924	24"	2.5	6	15.5	1500	950	44	90°	₹1020/-	PAIR

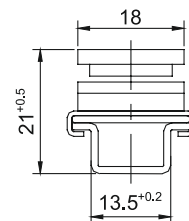
## FH22

22 mm Base 4 bar Hinges



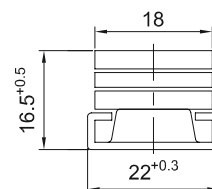
CODE	SIZE	BAR THICKNESS	STACK HEIGHT	WINDOW HEIGHT	WINDOW WIDTH	WINDOW WEIGHT	OPENING ANGLE	SS304	UNIT
FH2210	10"	2.5	16	1500	500	25	85°	₹740/-	PAIR
FH2212	12"	2.5	16	1500	600	30	90°	₹790/-	PAIR
FH2218	18"	2.5	16	1500	800	42	90°	₹1060/-	PAIR

**FHC**  
C Groove Hinges



CODE	SIZE	BAR THICKNESS	STACK HEIGHT	WINDOW HEIGHT	WINDOW WIDTH	WINDOW WEIGHT	OPENING ANGLE	SS304	UNIT
FHC12	12"	MIX	21	1400	400	27	90°	₹940/-	PAIR
FHC14	14"	MIX	21	1500	600	30	90°	₹1020/-	PAIR
FHC16	16"	MIX	21	1600	650	35	90°	₹1100/-	PAIR

**FHTH22**  
22 mm Base Hinges for Top Hung

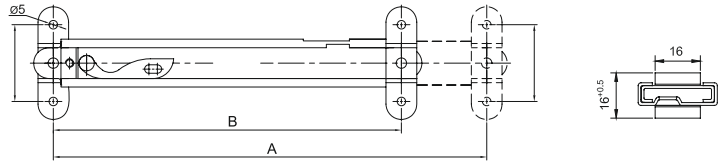


CODE	SIZE	BAR THICKNESS	NO OF BAR	STACK HEIGHT	WINDOW HEIGHT	WINDOW WIDTH	WINDOW WEIGHT	OPENING ANGLE	SS304	UNIT
FHTH2212	12"	3	4	16.5	800	1200	45	35°	₹800/-	PAIR
FHTH2214	14"	3	4	16.5	1000	1200	55	35°	₹890/-	PAIR
FHTH2216	16"	3	4	16.5	1200	1200	65	35°	₹1040/-	PAIR
FHTH2218	18"	3	5	16.5	1400	1500	80	35°	₹1150/-	PAIR
FHTH2224	24"	3	6	16.5	1500	1500	100	25°	₹1950/-	PAIR



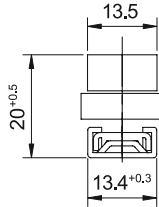
# FRICTION HINGES

**RA**  
Restriction Arm



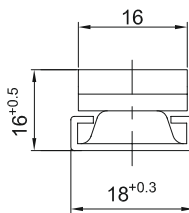
CODE	SIZE	A	B	SS304	UNIT
Ra8	8"	204	302	₹500/-	PAIR
RA12	12"	304	502	₹680/-	PAIR

**SA135**  
13.5 mm Base 2 Bar Hinges



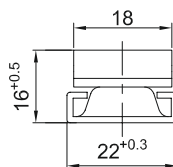
CODE	SIZE	BAR THICKNESS	SS202	SS304	UNIT
SA13510	10"	2	₹220/-	₹310/-	PAIR
SA13512	12"	2	₹240/-	₹340/-	PAIR

**SA13**  
18 mm Base 2 Bar Hinges



CODE	SIZE	BAR THICKNESS	SS202	SS304	UNIT
Sa1810	10"	2	₹220/-	₹320/-	PAIR
SA1812	12"	2	₹240/-	₹350/-	PAIR

**SA22**  
22 mm Base 2 Bar Hinges

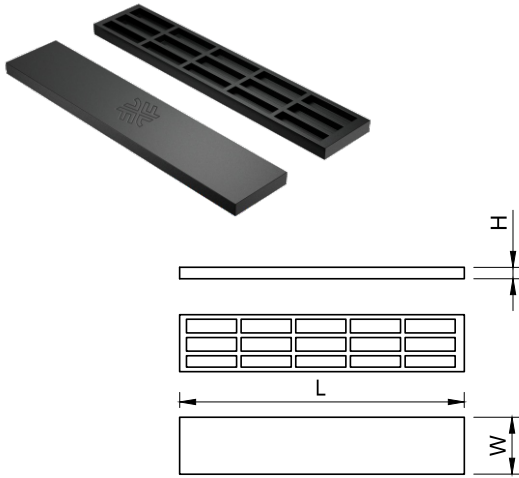


CODE	SIZE	BAR THICKNESS	SS304	UNIT
Sa2210	10"	2.5	₹430/-	PAIR



## PHGP

Rectangular Glass Packing



CODE	L x W x H (MM)	PRICE
PHGP01	100 x 22 x 1	₹3/-
PHGP02	100 x 22 x 2	₹3.5/-
PHGP03	100 x 22 x 3	₹4/-
PHGP04	100 x 22 x 4	₹4.5/-
PHGP05	100 x 22 x 5	₹5.5/-
PHGP06	100 x 25 x 1	₹3.5/-
PHGP07	100 x 25 x 2	₹4/-
PHGP08	100 x 25 x 3	₹4.5/-
PHGP09	100 x 25 x 4	₹5/-
PHGP10	100 x 25 x 5	₹6/-

CODE	L x W x H (MM)	PRICE
PHGP11	125 x 25 x 1	₹4/-
PHGP12	125 x 25 x 2	₹4.5/-
PHGP13	125 x 25 x 3	₹5.5/-
PHGP14	125 x 25 x 4	₹6/-
PHGP15	125 x 25 x 5	₹6.5/-
PHGP16	150 x 25 x 1	₹4.5/-
PHGP17	150 x 25 x 2	₹5/-
PHGP18	150 x 25 x 3	₹5.5/-
PHGP19	150 x 25 x 4	₹6/-
PHGP20	150 x 25 x 5	₹6.5/-

## PHUS

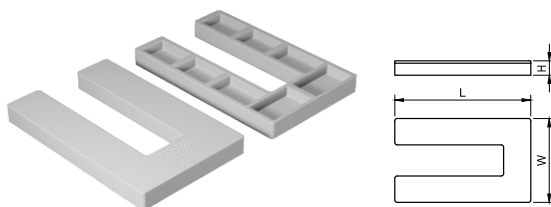
U Shimps



CODE	L x W x H (MM)	PRICE
PHUS01	50 x 40 x 1	₹2.6/-
PHUS02	50 x 40 x 2	₹3/-
PHUS03	50 x 40 x 3	₹3.5/-
PHUS04	50 x 40 x 4	₹4.5/-
PHUS05	50 x 40 x 5	₹5.5/-



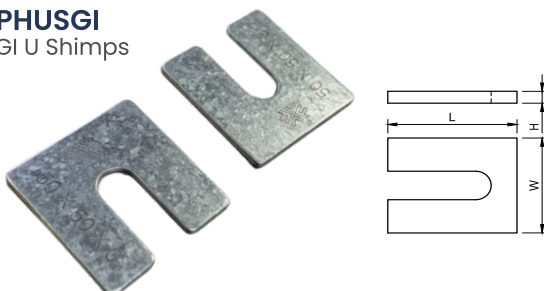
CODE	L x W x H (MM)	PRICE
PHUS06	75 x 50 x 1	₹3/-
PHUS07	75 x 50 x 2	₹3.5/-
PHUS08	75 x 50 x 3	₹4/-
PHUS09	75 x 50 x 4	₹5/-
PHUS010	75 x 50 x 5	₹6/-



CODE	L x W x H (MM)	PRICE
PHUS11	55 x 35 x 1	₹3/-
PHUS12	55 x 35 x 3	₹3.5/-
PHUS13	55 x 35 x 5	₹5/-

## PHUSGI

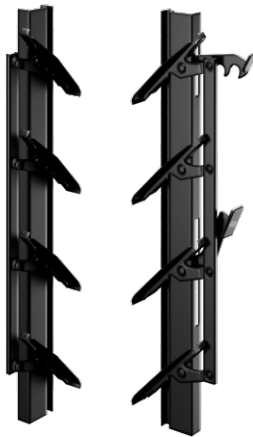
GI U Shimps



CODE	L x W x H (MM)	PRICE
PHUSGI01	50 x 50 x 1	₹6/-
PHUSGI02	50 x 50 x 3	₹10/-
PHUSGI03	50 x 50 x 5	₹14/-



# WINDOW LOUVERS



## ALUMINIUM LOUVERS

Blade (4")	Size (Inch)	Blade (4")	Size (Inch)
2 Blade	8 1/4	8 Blade	30 3/8
3 Blade	12	9 Blade	34
4 Blade	15 1/2	10 Blade	37 9/16
5 Blade	19 1/4	11 Blade	41 1/2
6 Blade	23	12 Blade	45 1/8
7 Blade	26 3/4	13 Blade	48 3/4

Two quality Available - Medium | Heavy  
 Medium : ₹64/- blade | Heavy : ₹68/- blade  
 Powder Coating : ₹10/- blade (Extra)  
 Golden Anodize : ₹12/- blade (Extra)



## FIBER LOUVERS

Blade (4")	Size (Inch)	Blade (4")	Size (Inch)
2 Blade	8	8 Blade	30 3/8
3 Blade	11 1/2	9 Blade	34
4 Blade	15 1/2	10 Blade	37 9/16
5 Blade	19 1/4	11 Blade	41 1/2
6 Blade	23	12 Blade	45 1/8
7 Blade	26 3/4	13 Blade	48 3/4

With Powder Coating - ₹40/- blade  
 With Golden Anodising - ₹44/- blade



## BOX LOUVERS

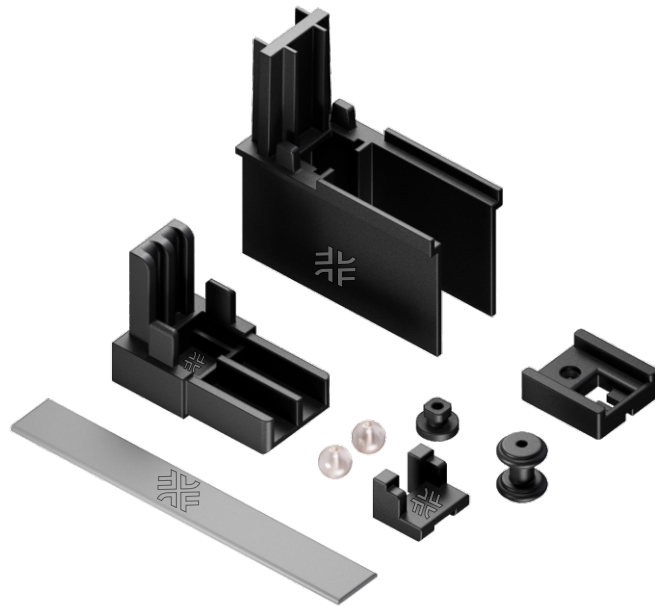
Blade (4")	Size (Inch)	Blade (4")	Size (Inch)
2 Blade	8 1/2	8 Blade	29 1/2
3 Blade	12	9 Blade	33
4 Blade	15 1/2	10 Blade	36 1/2
5 Blade	19	11 Blade	40
6 Blade	22 1/2	12 Blade	43 1/2
7 Blade	26	13 Blade	47

Price Per blade - ₹176/- blade  
 Powder Coating : ₹12/- blade (Extra)  
 Golden Anodize : ₹16/- blade (Extra)



# PLEATED MESH AND ACCESSORIES





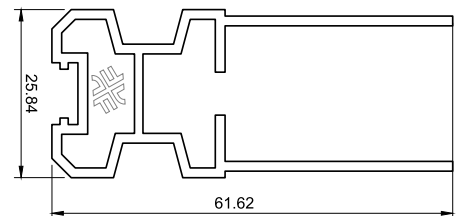
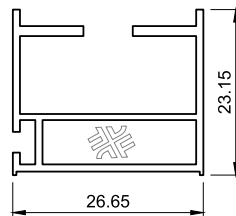
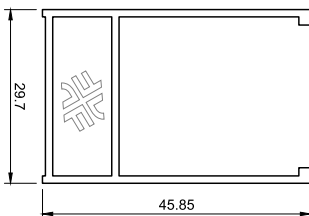
**FULL FABRICATED MESH**

Powder coated ₹300 /- sqft  
Anodize ₹320 /- sqft

**PMMH**

Plastic hardware - ₹125/- set  
2 piece Shutter Joints  
4 piece Frame Joints  
2 piece Liner

2 piece Liner stopper  
2 piece Roller  
Mesh PVC Patti - ₹310/- roll  
Moti - ₹0.8/- pc  
Wiser - ₹1.5/- pc



**PMTBP**

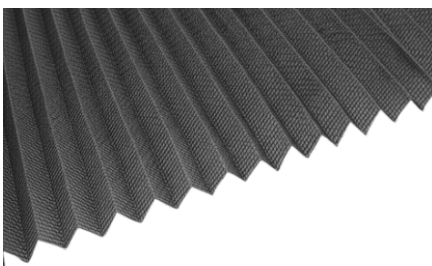
Top / Bottom Profile  
16ft (0.138kg/ft) ₹710/- kg

**PMVP**

Vertical Profile  
16ft (0.094kg/ft) ₹710/- kg

**PMSP**

Shutter Profile  
15ft (0.23kg/ft) | ₹710/- kg



**PMMESH**

Pleated Mesh (25mtr Roll)  
6ft - ₹7760/- roll | 7ft - ₹9472/- roll  
8ft - ₹10864/- roll | 10ft - ₹12912/- roll

**PMTH**

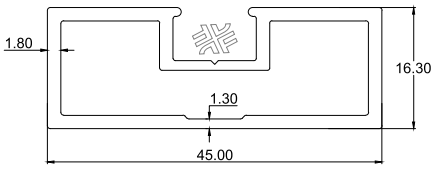
Thread | 1600 mtr Roll ₹2.2/- mtr

**PMM**

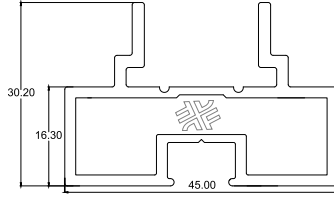
Magnet - 250 Mtr/roll  
D109 - ₹50/- Mtr  
H110 - ₹58/- Mtr  
C111 - ₹48/- Mtr



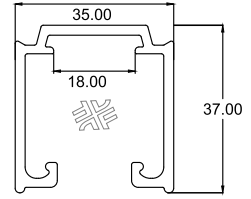
# 16X45 PROFILE



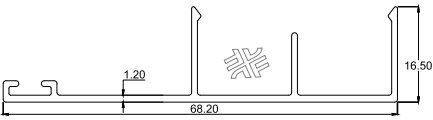
**P1645FP**  
Frame Profile



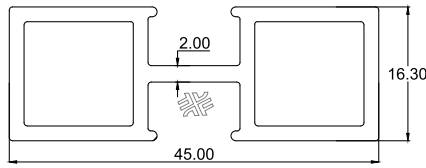
**P1645TBP**  
Top Bottom Profile



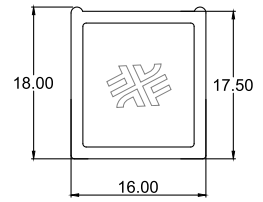
**P1645TP**  
Track Profile



**P1645CP**  
Cover Profile



**P1645MP**  
Middle Divider Profile



**P1645PP**  
Pipe Profile

CODE	PRODUCT	LENGTH	MILL FINISH	BLACK	BRUSH GOLD
P1645FP	FRAME PROFILE	10ft	₹ 1,500.00	₹ 1,900.00	₹ 2,100.00
		12ft	₹ 1,800.00	₹ 2,400.00	₹ 2,600.00
		16ft	₹ 2,400.00	₹ 3,100.00	₹ 3,300.00
P1645TBP	TOP BOTTOM PROFILE	10ft	₹ 1,900.00	₹ 2,400.00	₹ 2,600.00
		12ft	₹ 2,400.00	₹ 2,760.00	₹ 2,960.00
		16ft	₹ 3,100.00	₹ 3,900.00	₹ 4,100.00
P1645TP	TRACK PROFILE	10ft	₹ 2,000.00	₹ 2,800.00	₹ 3,000.00
		12ft	₹ 2,600.00	₹ 3,600.00	₹ 3,800.00
		16ft	₹ 3,200.00	₹ 4,800.00	₹ 5,000.00
P1645CP	COVER PROFILE	10ft	₹ 1,000.00	₹ 1,800.00	₹ 2,000.00
		12ft	₹ 1,200.00	₹ 2,400.00	₹ 2,600.00
		16ft	₹ 1,600.00	₹ 3,400.00	₹ 3,600.00
P1645MP	MIDDLE DIVIDER PROFILE	10ft	₹ 1,600.00	₹ 2,100.00	₹ 2,300.00
		12ft	₹ 2,000.00	₹ 2,400.00	₹ 2,600.00
		16ft	₹ 2,600.00	₹ 3,200.00	₹ 3,400.00
P1645PP	PIPE PROFILE	10ft	₹ 600.00	₹ 1,000.00	₹ 1,200.00
		12ft	₹ 800.00	₹ 1,400.00	₹ 1,600.00
		16ft	₹ 1000.00	₹ 1,600.00	₹ 1,800.00



## SLIM SYNCRO HARDWARE



COMBINATION	PRICE (₹)
1+1	₹ 4,400.00
2+1	₹ 13,000.00
3+1	₹ 17,500.00
4+1	₹ 20,000.00
2+2	₹ 14,000.00
2+0	₹ 13,000.00
3+0	₹ 20,000.00
4+0	₹ 24000.00



### SLIDING HANDLE

Black - ₹1000/- pc  
Golden - ₹1200/-pc



### MANUAL LOCKING HANDLE

Black - ₹1800/- pc  
Golden - ₹2000/-pc



### SLIDING LOCK

Black - 5600/- pc



### PROFILE CONNECTOR

Casting - ₹32/- pc



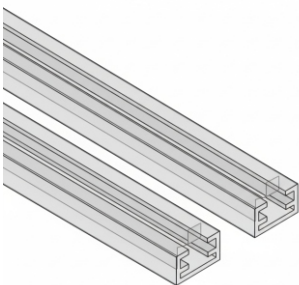
### MS Connector

MS - ₹100/- pc



### Zinc Connector

Zinc - ₹350/- pc



### Glass PVC

5mm | 8mm | ₹100/- mtr



## OPENABLE PARTITION



### PROFILE CONNECTOR

Casting - ₹32/- pc



### MS CONNECTOR

MS - ₹100/- pc



### ZINC CONNECTOR

Zinc - ₹350/- pc



### MAGNETIC DOOR LOCK ONE SIDE KEY

Black - ₹3600/- pc



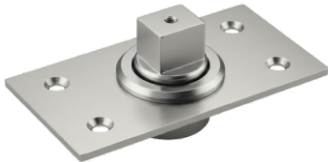
### PIVOT

₹170/- pc



### TOP BOTTOM 7X45

₹700/- pc



### 360 DEGREE PIVOT SPRING

₹1100



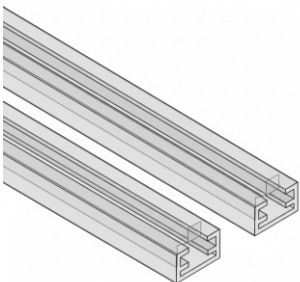
### BUTTERFLY HINGES

Black - ₹360/- pc  
Golden - ₹400/- pc



### SOFT CLOSING HINGES

Black - ₹1800/- pc  
Golden - ₹2000/- pc



### GLASS PVC

Black - ₹3600/- pc



**PROFILE CONNECTOR**  
Casting - ₹32/- pc



**MS CONNECTOR**  
MS - ₹100/- pc



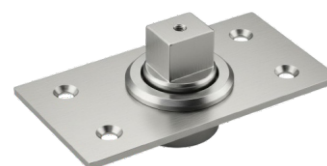
**ZINC CONNECTOR**  
Zinc - ₹350/- pc



**PIVOT**  
₹ 170/- pc



**TOP BOTTOM 7X45**  
₹700/- pc



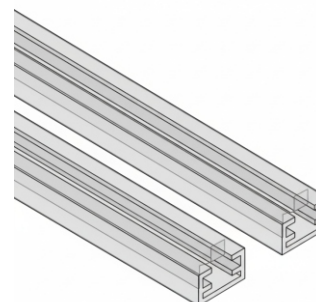
**360 DEGREE PIVOT SPRING**  
₹1100



**BUTTERFLY HINGES**  
Black - ₹360/- pc  
Golden - ₹400/-pc



**SLIDING FOLDING ROLLER SET**  
₹1600/- set

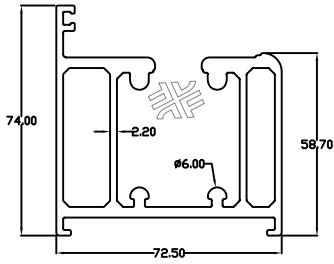


**GLASS PVC**  
Black - ₹3600/- pc



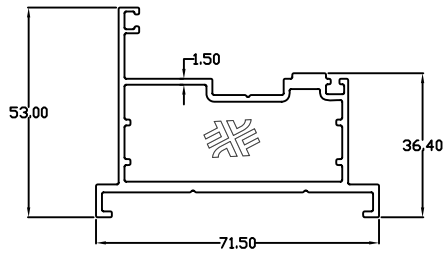
# ALUMINIUM SLIDING FOLDING SYSTEM





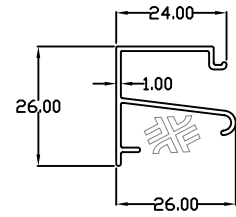
### DF - TOP

0.930 kgs/ft | ₹720/- kg



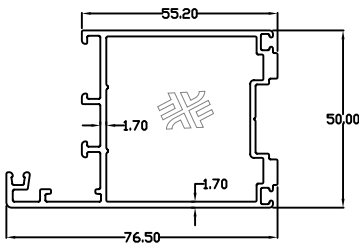
### DF - VERTICAL

0.375 kgs/ft | ₹720/- kg



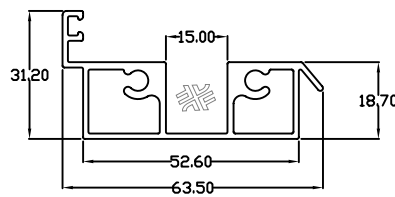
### DF - SUG CLIP

0.070 kgs/ft | ₹720/- kg



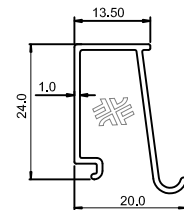
### DF - SHUTTER

0.412 kgs/ft | ₹720/- kg



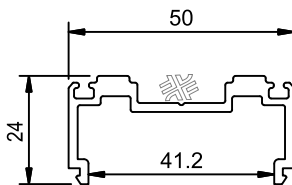
### DF - BOTTOM

0.280 kgs/ft | ₹720/- kg



### DF - DGU CLIP

0.050 kgs/ft | ₹720/- kg



### DF-ADAPTOR

0.182 kgs/ft | ₹800/- kg



### DF-MZS20

Door Handle | ₹1604/- pc



### DF-MSC28/II

Door Lock | ₹1820/- pc



### DF-DMS20C

Frame Plate | ₹220/- pc



## SLIDING FOLDING SYSTEM



### DF-T28D

Handle | ₹580/- pc



### DF-FXZ6

Alu. Transmission Rod | ₹640/- pc



### DF-SCX500A

Door Latch 500mm | ₹580/- pc



### DF-KILAB/T

Cylinder | ₹1476/- pc



### DF-CDQ20

Towerbolt Driver | ₹580/- pc



### DF-FXZ1B

Top Roller Hinges | ₹2496/- pc



### DF-FXZ11

Supportive hinges | ₹580/- pc



### DF-FXZ5B

Bottom Roller Hinges | ₹2230/- pc



### DF-FXZ12

Pivot Hinges | ₹936/- pc



### DF-SK10

Locking Piece | ₹156/- pc



### EPDM





**DHANUKA**  
FITTINGS



+91 9004 881621  
+91 9004 234722

info@dhanukafittings.com

19/A Shashtri Industrial Estate, Behind National Dairy,  
Bhayander East, Thane 401105

www.dhanukafittings.co.in